



# IBIS<sup>TM</sup>

## The interoperable AI intelligence layer for BIM and capital construction

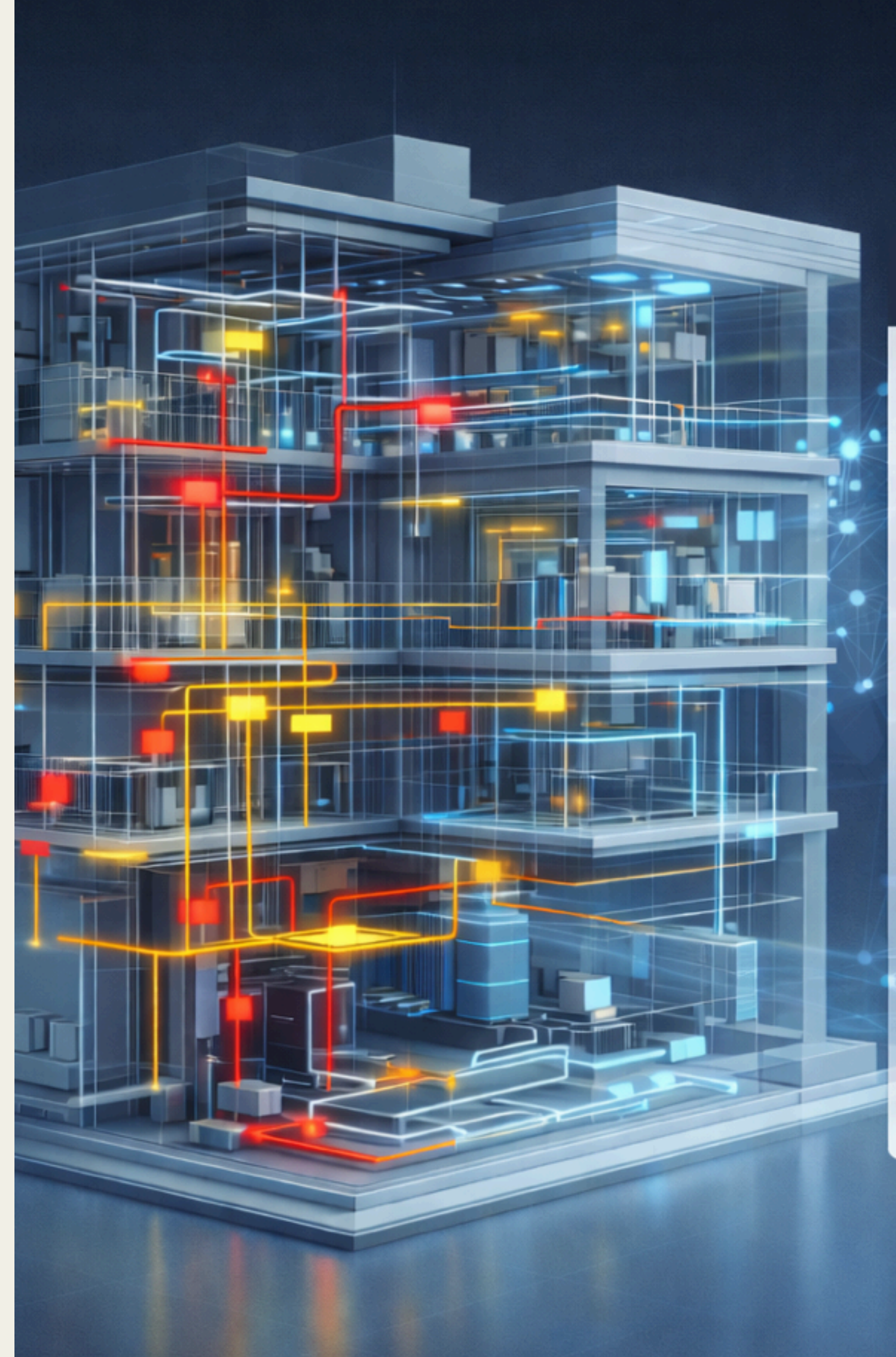
**PRESENTED BY**

DR. SULEIMAN ALSAFOURI, PHD

SULEIMAN@GENICON.AI

DR. MICHAEL A BEAUREGARD, PHD MBA

DRB@GENICON.AI





# OVERVIEW



003

OUR MISSION

---

004

PROBLEM STATEMENT

---

006

INTRODUCTION

---

007

COMPETITIVE LANDSCAPE

---

008

GENICON'S IBIS AT WORK

---

010

MARKETING CHANNELS & TARGET AUDIENCES

---

011

REVENUE & IBIS LAUNCH SCHEDULE

---

013

GENICON LEADERSHIP

---

015

JUST A FEW FACTS

---

## MISSION

Our mission is to turn **complex capital projects** into resilient, efficient, and **high-performing** assets through the adoption of **purpose-built AI**.





# Problem Statement

---

*“We need a decision tool that allows our team to quickly assess design choices, addressing layout, cost, schedule, constructibility, and life cycle maintenance costs.*”

***The scope:*** *any construction type, anywhere in the world”*

# Problem Statement



**“FOR ARCHITECTS AND ENGINEERS DESIGNING COMPLEX FACILITIES, NO MAJOR DESIGN CHOICE STANDS ALONE”**

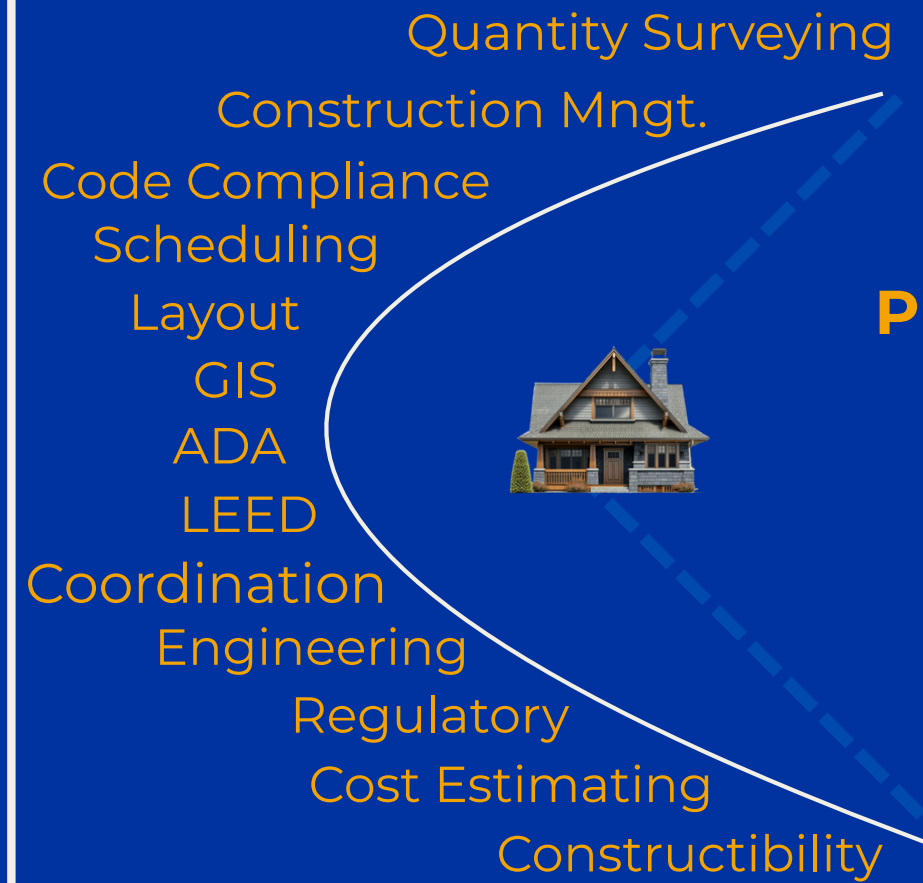
Richard Solares,  
Principal at Urban Architecture Lab  
Los Angeles, CA



KNOWLEDGE

Disparate Parametric Input

CD Set



## Project Delivery

- On Schedule
- On Budget
- Compliant

BANDWIDTH



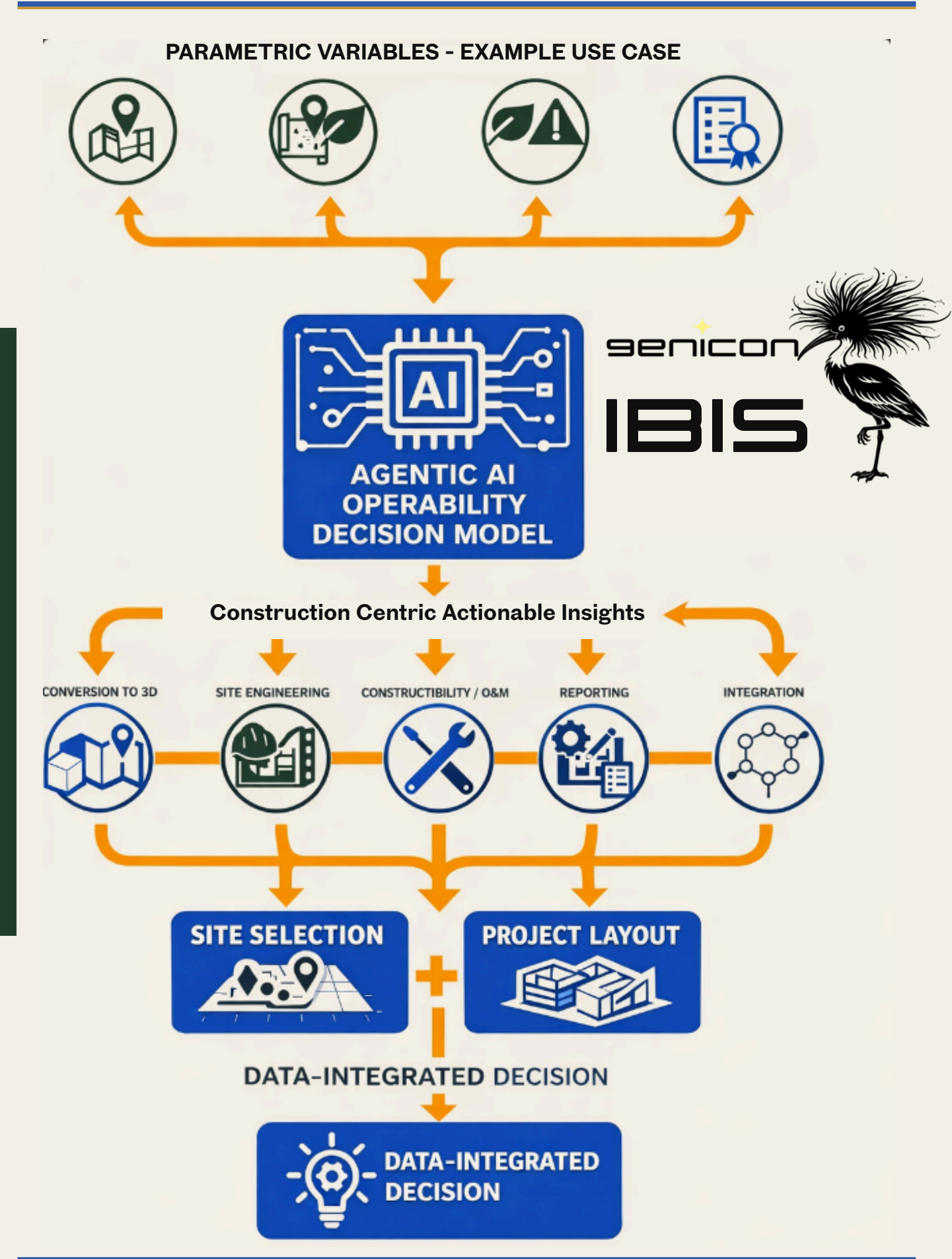
Today's tools analyze isolated problems  
They don't connect the system.

# INTRODUCTION

- Agentic AI for Construction Decisions
- Real-Time BIM Intelligence Engine

**Faster Decisions, Lower Risk, Better Outcomes**

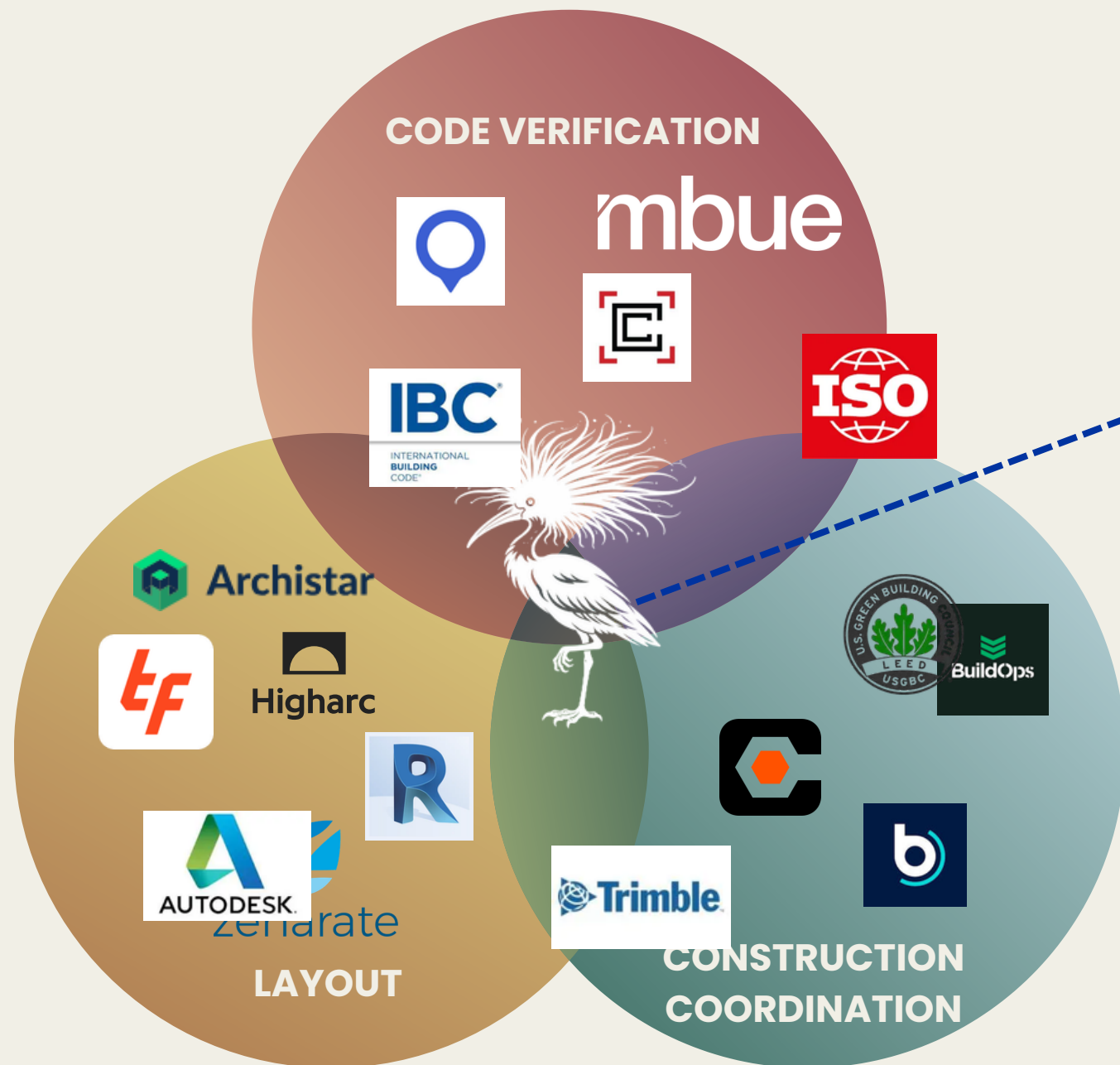
**IBIS nests as a workflow within the BIM Environment, effectively solving the parametric problem**





# IBIS v. EXISTING TECH STACK

## INDUSTRY USE CASES & MARKET



### ARCHITECTURE

- CODE VERIFICATION
- ADA VERIFICATION
- PERMIT REQUIREMENTS
- LAYOUT
- CLASH DETECTION
- DESIGN & MODELING
- SHEET GENERATION
- LEED VERIFICATION

### CONSTRUCTION MNGT.

- CHANGE ORDER & RFI MANAGEMENT
- CLASH DETECTION
- COST MODELING
- QUANTITY SURVEYING
- 5D BIM (SCHEDULE + COST)
- PERMITTING

### ENGINEERING

- GIS
- AI ENABLED ENGINEERING CALCULATIONS
- CLASH DETECTION
- COST ESTIMATION
- BILL OF QUANTITIES
- AUTOMATED ROUTING OF ELECTRICAL AND PROCESS PIPING

### OWNER

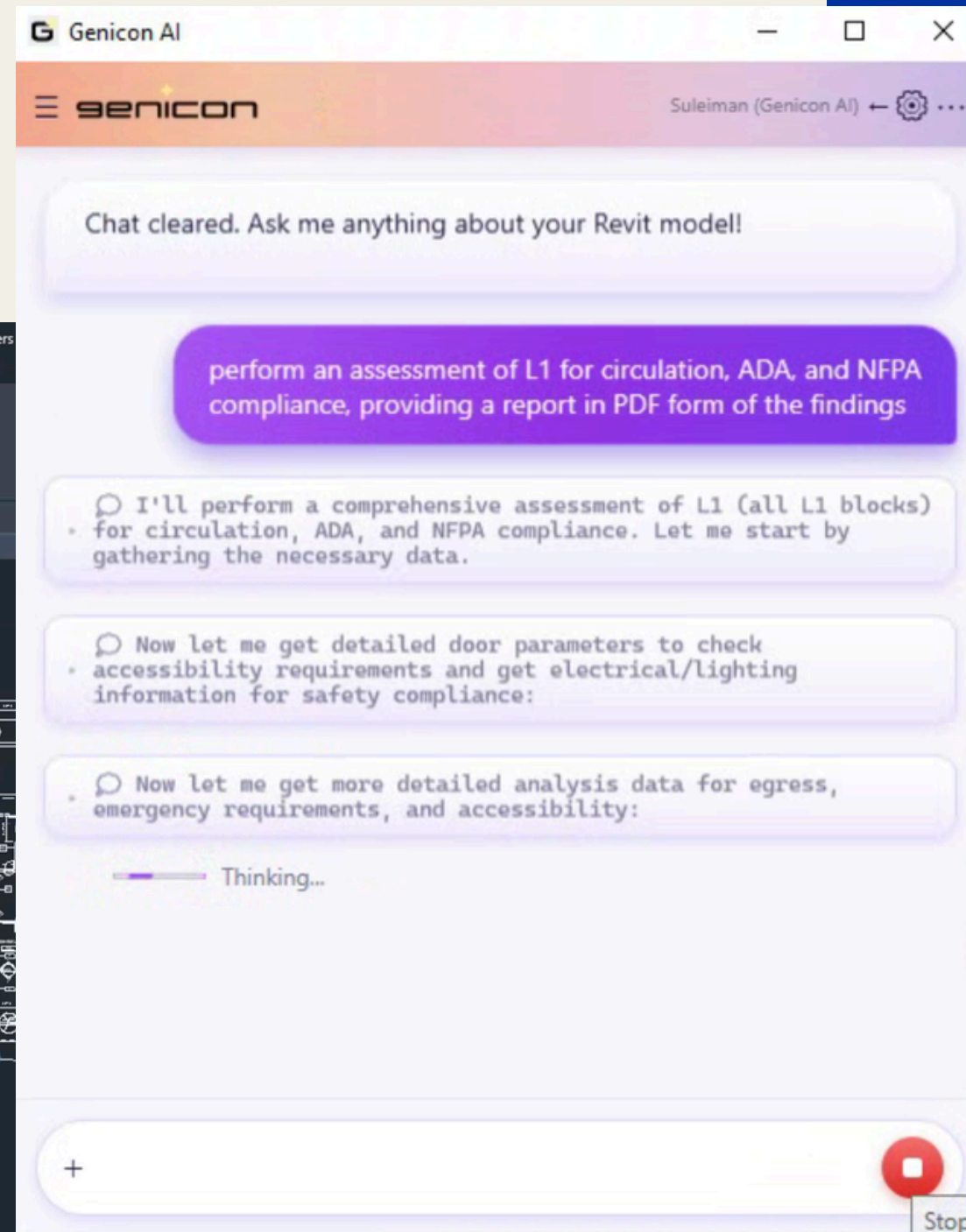
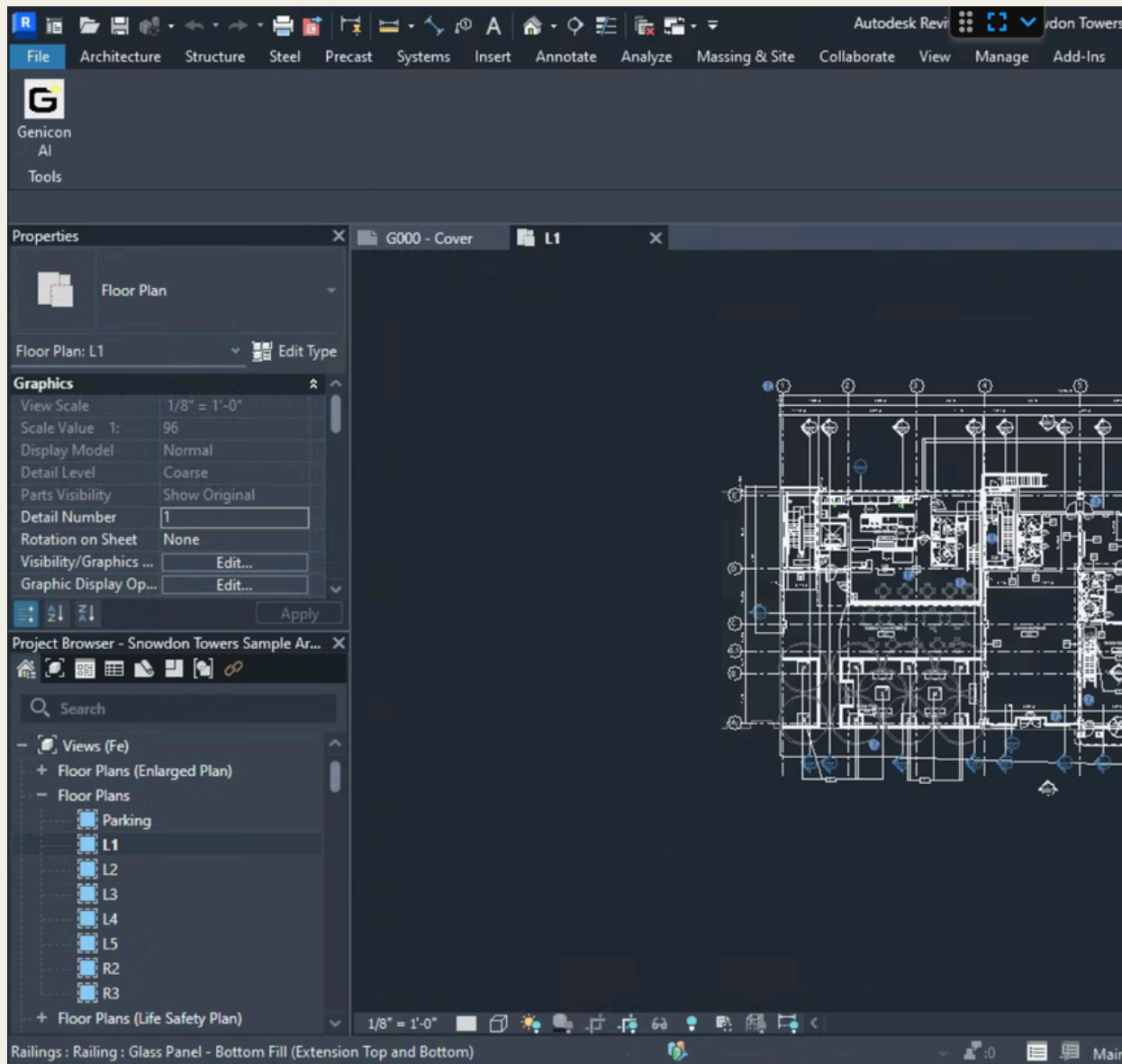
- REGULATORY COMPLIANCE
- GIS INTEGRATION
- LAYOUT
- COST ESTIMATING
- SCHEDULE INTEGRATION
- QUANTITY SURVEYING
- FIELD COORDINATION
- DECISION MANAGEMENT

**IBIS DOESN'T JUST ALLOW YOU TO CHAT WITH THE MODEL, IBIS IS THE MODEL, MORPHING VIA INTEROPERABLE AGENTIC DESIGN**



# IBIS AT WORK

**Prompt:** *perform an assessment of L1 for circulation, ADA, and NFPA compliance, providing a report in PDF form of the findings*



## PARAMETERS

- NFPA has been loaded into IBIS, enabling ibis' retrievable access generation (rag); once knowledge is embeded into IBIS, that knowledge is carried forward project-to-project
- ADA Guidelines have not been loaded into IBIS, requiring agentic ai augmentation
- asking IBIS to perform an assessment of circulation space is subjective in nature, requiring a further agentic assessment
- user queries or "tools" are captured by Genlcon for use accross the user platform



# IBIS AT WORK

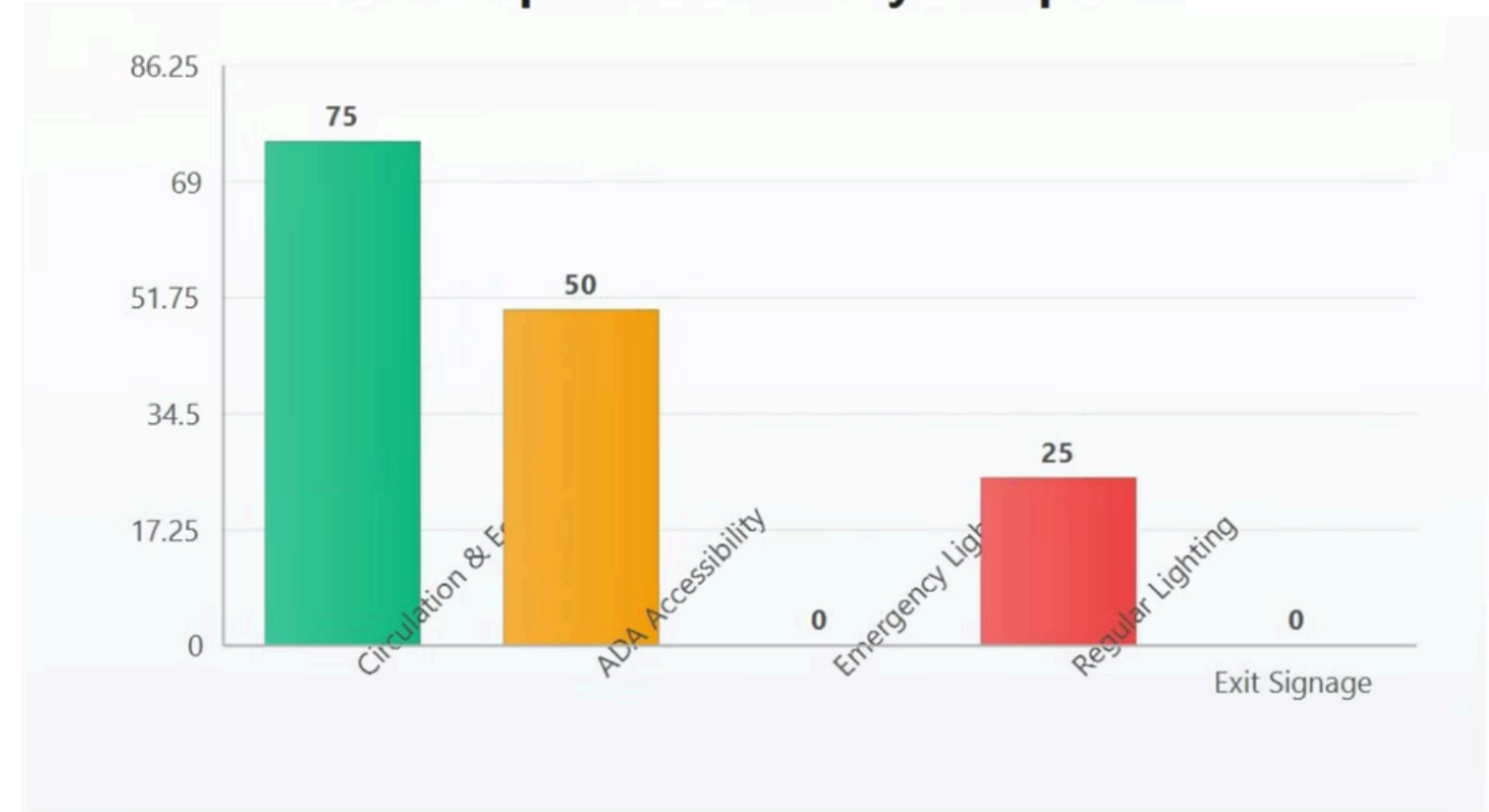
IBIS provides:

1. A high level analysis in the chat
2. A detailed analysis is provided via PDF, Word, or CSV file
3. A professional reports to include graphs and summary tables as directed by the user
4. An analysis backed by comprehensive citations

## 3 PROFESSIONAL REPORTING

### 4. CODE COMPLIANCE MATRIX

L1 Compliance Status by Discipline



## 4 FULL CITATIONS

### APPENDIX: BUILDING CODE REFERENCES

- ? NFPA 101: Life Safety Code (2021 Edition)
- ? IBC: International Building Code (2021 Edition)
- ? ADA: 2010 ADA Standards for Accessible Design
- ? NFPA 110: Standard for Emergency and Standby Electric Power Systems
- ? ASHRAE 90.1: Energy Standard for Buildings (lighting power density reference)

1

Assessment Complete ✓

I've completed a comprehensive **Level 1 Compliance Assessment** covering circulation, ADA accessibility, and NFPA 101 Life Safety Code requirements. The report has been generated and saved as a PDF.

**Key Findings:**

**FAILS - Multiple Critical Deficiencies Identified**

Category	Status	Summary
Circulation & Egress	✓ PASS	2+ exits per space, IBC-compliant door widths (36"), adequate egress capacity
ADA Accessibility	⚠ PARTIAL	Accessible entrance, elevator present, BUT elevator (E2) lacks required lighting
NFPA 101 Compliance	✗ FAIL	<b>Critical deficiencies in emergency lighting and signage</b>

**Critical Violations:**

- NO EMERGENCY LIGHTING** - Entire L1 (7,808 SF) missing emergency egress lighting system
- Missing Regular Lighting** - 4 critical spaces:
  - Café Kitchen (433 SF) - FOOD SERVICE area
  - Outdoor Dining (675 SF)
  - Pocket Park (1,776 SF)

2

### 6. CRITICAL ACTION ITEMS

**IMMEDIATE (Within 7 days)**

- 1. Install Lighting in Elevator E2**  
 ? Violation: NFPA 101 ?7.8, ADA ?206.3  
 ? Minimum: 3x recessed incandescent 60W or LED equivalent  
 ? Emergency battery backup: 90 minutes @ 1.0 fc minimum
- 2. Install Lighting in Caf? Kitchen (Room 102)**  
 ? Violation: IBC ?1205.2 (Food service areas)  
 ? Area: 433 SF  
 ? Minimum: 50 fc illumination per IBC Table 1206.2  
 ? Recommendation: 6-8x LED troffer fixtures (2700-3000K for food areas)

**URGENT (Within 30 days)**

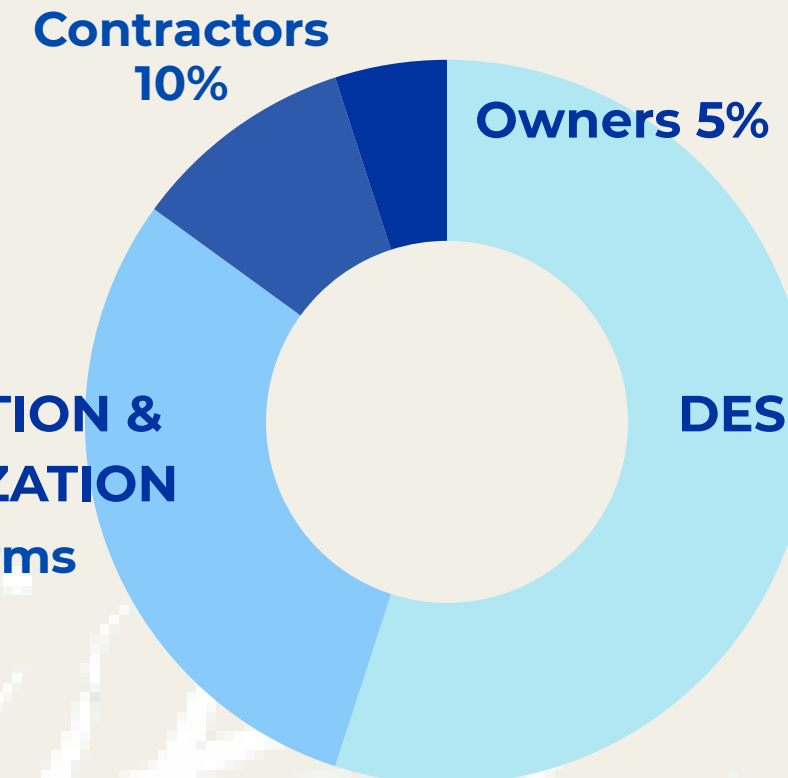
- 3. Implement Emergency Lighting System**  
 ? Covers all L1 exits, aisles, and exit access corridors  
 ? Coverage: All 7,808 SF of L1  
 ? Type: Central battery or individual unit equipment  
 ? Duration: 90 minutes @ 1.0 fc minimum (horizontal)  
 ? Est. 60-80 fixture units required across L1
- 4. Install Emergency Exit Signage**  
 ? Stairwells S1 & S2: Illuminated exit signs at all exits + intermediate landings  
 ? Elevator E2: Illuminated signage  
 ? Exit discharge: Path of egress clearly marked
- 5. Install Emergency Egress Lighting in Stairwells**  
 ? Minimum 1.0 fc at treads, 5 fc at exit discharge  
 ? Cover all landings in S1 & S2



# MARKETING CHANNELS & TARGET AUDIENCES

<b>MARKETING CHANNELS</b>	TARGETED ADS, CONTENT MARKETING, SEO.
<b>INDUSTRY CONFERENCES</b>	AUTODESK UNIVERSITY, ENR, AI4, LCI, IFMA
<b>THOUGHT LEADERSHIP</b>	LINKED IN LONG-FORM ARTICLES, CASE STUDIES, RESEARCH / WHITE PAPERRS
<b>B2B PARTNERSHIPS</b>	AUTODESK, BENTLY, HEXIGON
<b>DIRECT OUTREACH</b>	EXECUTIVE BRIEFINGS, PILOT PROJECTS
<b>ACADEMIC PARTNERSHIPS</b>	IRA A FULTON SCHOOL OF ENGINEERING, UNIVERSITY OF COLORADO AT BOULDER BIM LAB

## PROJECT COST & COORDINATION



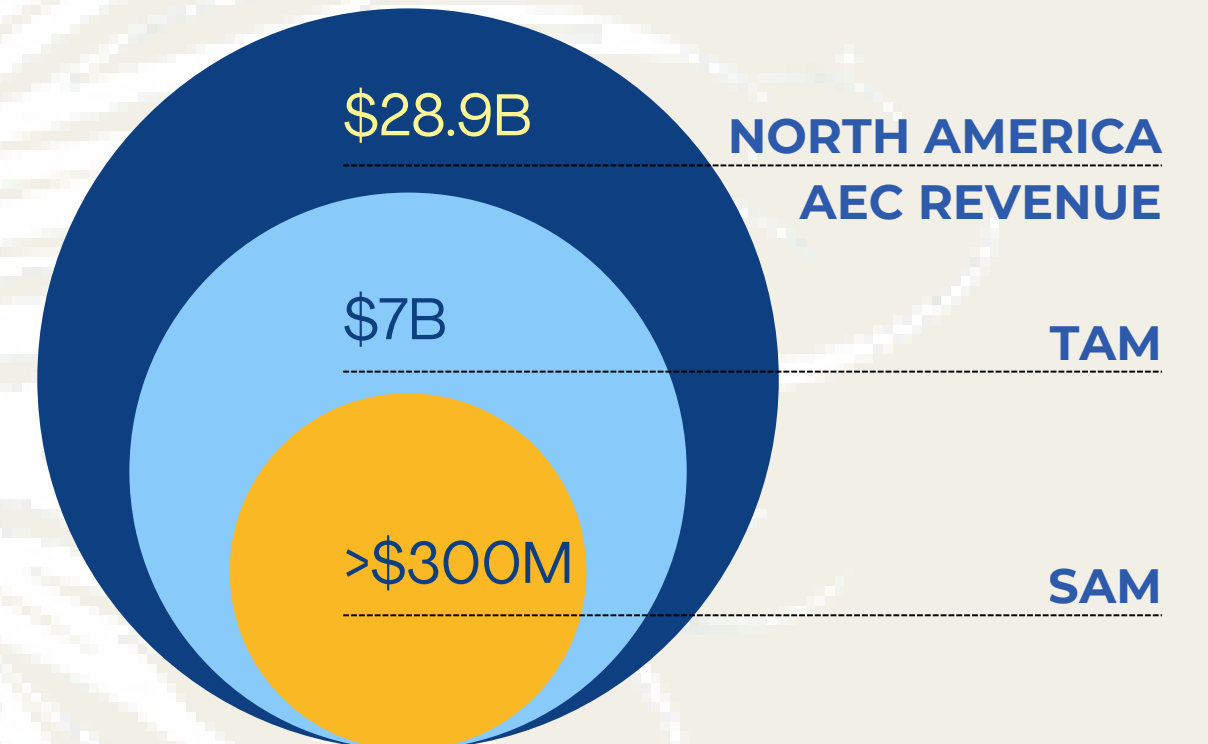
## DESIGN AUTOMATION & ROUTING OPTIMIZATION

Eng. Firms  
30%

## DESIGN AUTOMATION

Arch. Firms  
55%

**\$30 BILLION**





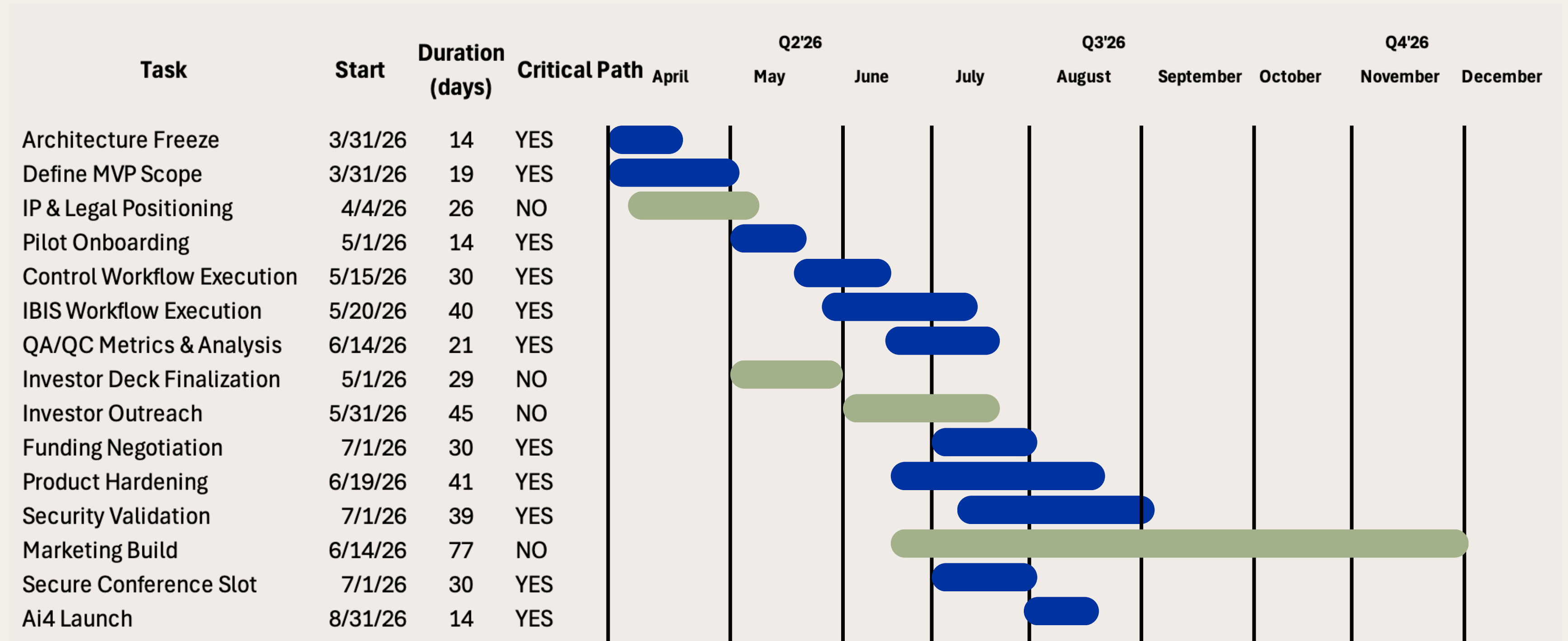
# FUNDING & SCHEDULE

Funding	Milestone	Target Date	Capital Required (\$M)	Monthly Burn Rate (\$M)	Implied Pre-Money Valuation (\$M)	Notes
PreSeed SAFE	Architecture Freeze Complete	3/31/26	0.15	0.15	8	Technical Readiness
	Pre-Launch Marketing	4/20/26	0.35	0.20	12	Generate Visibility
	Pilot Validation Complete	6/5/26	0.50	0.25	15	Validated Perf. Metrix
Seed SAFE	Conference Launch Ai4	8/15/26	0.30	0.25	25	Public Launch + Traction
	Enterprise Sales Expansion	2/1/27	0.50	0.30	40	Rev. Pipeline / Scaling
Series A	Target - Series A Raise	4/1/27	2.00	0.35	75	Growth Capital
	IBIS 2.0 Platform Release	8/1/27	1.50	0.50	120	Expanded Enterprise Capability

YEAR	STRATEGIC FOCUS	REV. TARGET	PRODUCT DEVELOPMENT	KPI'S
YEAR 1	MARKETING VALIDATION + ENTERPRISE PILOTS	\$5M	CORE IBIS & COMPLIANCE AI	3 ENTERPRISE CLIENTS
YEAR 2	SCALING / MOBILE APP / CHANNEL PARTNERS	\$25M	VERSION 2 / O&M MODELS	15 ENTERPRISE CLIENTS
YEAR 3	GLOBAL EXPANSION / FIELD AND OFFICE	\$75M	AUTONOMOUS LAYOUT	50+ ENTERPRISE CLIENTS



# IBIS LAUNCH SCHEDULE





# ABOUT US



## **Dr. Suleiman Alsafouri, Ph.D.**

CO-FOUNDER, CHIEF TECHNICAL OFFICER

Suleiman is a recognized expert in artificial intelligence, machine learning, augmented and virtual reality, and digital technologies for design, construction, and the built environment. He has developed advanced solutions that expand automation in Building Information Modeling (BIM) and Virtual Design and Construction (VDC). Dr. Alsafouri's work has been widely published and cited across academic and professional forums. He will provide technical leadership for GenIcon and the IBIS platform.



## **Dr. Michael A. Beauregard, Ph.D., MBA**

CO-FOUNDER, CHIEF EXECUTIVE OFFICER

Michael is a recognized subject matter expert in the built environment, with more than 20 years of leadership experience across architecture, construction, and operations. He specializes in pre-construction process improvement and strategic technology adoption for complex capital projects. His work has focused on implementing best practices and identifying high-impact solutions that strengthen design coordination, execution, and workflow efficiency.



# ADVISORY BOARD OF DIRECTORS



**Maureen Ehrenberg, FRICS, CRE**

Executive Managing Director, Sireas  
CEO Blue Skyre,  
President Lessen



**Amol Ajgaonkar**

CTO & Technologist with more 25 patents  
CTO Insight  
Intel Channel Board of Advisors



**Raj Gupta**

CEO Environmental Design Solutions  
Retired



**Mr. Fred Meeske**

SVP Rosendin Electric, Technology  
Analytics, BIM, & Engineering  
Board Member Junior Achievement, Arizona



**Dr. Steven Ayer, Ph.D.**

Associate Professor  
University of Colorado, Boulder  
Emerging Technologies Building  
Information Modeling Lab Chair



**Richard Solares**

Founder, Urban Architecture Lab



# JUST A FEW FACTS



20+

YEARS OF EXPERIENCE



200+

VALIDATED USE CASES



+5

COMPANIES ENGAGED

EXXONMOBIL  
INTEL CORP  
ROSENDIN  
MACE  
UAL ARCHITECTS  
KENJI  
CONSTRUCTION  
ENG



>\$3000

SAM ( \$M USD)

# THANK YOU

+1 (602) 692-1908

---

DRB@GENICON.COM

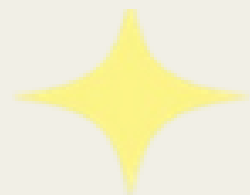
---

WWW.GENICON.AI

---



9ENICON



GOVERN THE MODEL, GOVERN THE MIND